

BILLERICAY TOWN

BTFCWOMEN.CO.UK

2024-25 SEASON



**NEW SEASON
NEW TEAM**

GWALIA UNITED | FAWN L SOUTHERN PREM | SUNDAY 18 AUGUST 2024 | 2:00PM

WELCOME TO NEW LODGE

This afternoon we welcome everyone back to New Lodge for the open match of the 2024-25 season.

We also welcome the staff, players and supporters of Gwalia United, who have travelled from Cardiff to be here. You can learn more about Gwalia United on page 12,

It's been a busy summer for the club with lots of comings and goings, which you can read about on page 3, 4 and 5.

Today is Adrian Parral's first competitive match since coming in as first team manager.

Adrian was most recently the manager of Gibraltar Lions men's team. Prior to that he led Gibraltar's women's Team and was assistant manager for the men.

We also have a new website (btfcwomen.co.uk) and a new look programme, but with the same old content.

You can now follow us on WhatsApp by opening the app and search for Billericay Town FC Women

BILLERICAY TOWN Est 1996

- 03 | Leaving
- 04 | Staying
- 05 | Joining
- 06 | 2024-25 season
- 07 | Reserves
- 09 | 2023-24 Season
- 11 | Sponsorship
- 12 | Gwalia United
- 14 | On the road
- 15 | World Cup quiz
- 16 | Breon Grant
- 18 | The squads

Chairman
Greg Lake

General Manager
Kim Coster

Club Secretary
Lisa Robins

First Team Manager
Adrian Parral

Coaches
Jay Prem

Alex Payne (Strength)

Goal Keeping Coach
Anthony Dean

Medical Team
Emily Cook
Sadie Hunt

Videographer
Ben Robinson

Photographer
Gemma Brown

Programme Editor
James Nason

STARTS23

SUBS2

GOALS8

12BEAU PARKER

iCore

btfcwomen.co.uk



LEAVING



Zoe Rushen joined the club in 2018, ending the season with 34 goals and the Golden Boot, an award that was won again in 2022.

Zoe helped seal the Division 1 South-East title and promotion in 2022 as well as winning two Essex Women's Cups with The Blues.

Zoe was dual-registered with Chelmsford last season, helping them to promotion and will remain with City.

STARTS 142

SUBS 10

GOALS 97

ZOE RUSHEN

Long time goal keeper and team captain **Alex Baker** announced her decision to leave the club during the summer. Al B made 113 appearances for Billericay since joining in 2018. Al had kept 39 clean sheets helping the club to promotion and two Essex Women's Cups.

Jánaye Beaufort joined as last season from London Bees. Jánaye left in the summer to find a club closer to home and made 23 appearances, scoring once last season.

Leanne Bell also joined last season, having been playing for Portsmouth. Leanne travelled from Surrey to play for the club 34 times, scoring 4 goals. Leanne has joined newly promoted AFC Wimbledon.

Louise Davis was dual-registered from Tottenham Under 21s. Louise made 9 appearances, scoring 2 and returned to Spurs.

Club Captain **Karissa Doo** announced in a video last Christmas that she would be retiring at the end of the season. KK joined The Blues in 2018, making 118 appearances and scoring 34 goals and was part of the teams that won promotion and lifted two Essex Women's Cups.

Amber Gaylor came back to New Lodge last season, having had time away from playing. Amber was part of the team that won promotion to the third tier and made a total of 21 appearances and scoring 8 times. Amber was announced as a Real Bedford player in the summer.

Vice-Captain **Lucy Jones** left in the summer and joined Chatham Town. Lucy had made 133 appearances, the most on record, and scored 26 goals since joining in 2017 and helping the club to promotion and 2 Essex Women's Cups.

Georgie Morton missed most of last season through injury, returning with a few matches to go. G joined from Tottenham U21s in 2021, made 58 appearances and was part of the promotion team as well as being an Essex Women's Cup winner. G has joined AFC Sudbury.

Morgan Rogers came to New Lodge from Watford 2 seasons ago. Morgs appeared 38 appearances and scored 2 goals (both direct from corners). Morgan helped the club win the Essex Women's Cup.

Hope Smith made 6 appearances until breaking her ankle.



STAYING

A number of familiar faces have remained with the club.

Last season's top goal scorer, **Maddie Biggs**, will be staying with us. Mads ended last season with 20 goals.

Nia Evans ended last season having dual-registered from Ipswich Town. Nia has now joined us for the 2024-25 season.

One of a handful of players dual-registered from Spurs U21s was **Ella Houghton**. Ella scored 4 times in 10 appearances for Town last season.

Versatile defender **Charlotte O'Shea** is now the club's longest serving player, having first appeared in 2022. Charlotte, who is eligible to play for The Philippines, has made 55 appearances for the club and scored once.

Beau Parker has returned to first team action having missed last season through injury. Before this Beau joined from Gillingham and made 25 appearances, scoring 8 times.

Centre-back **Liv Smith** joined from Ipswich last season and scored twice in 27 appearances.

Romany Wellington was dual-registered from Charlton last season and appeared 4 times. Rome is eligible to play for Jamaica.

STARTS30

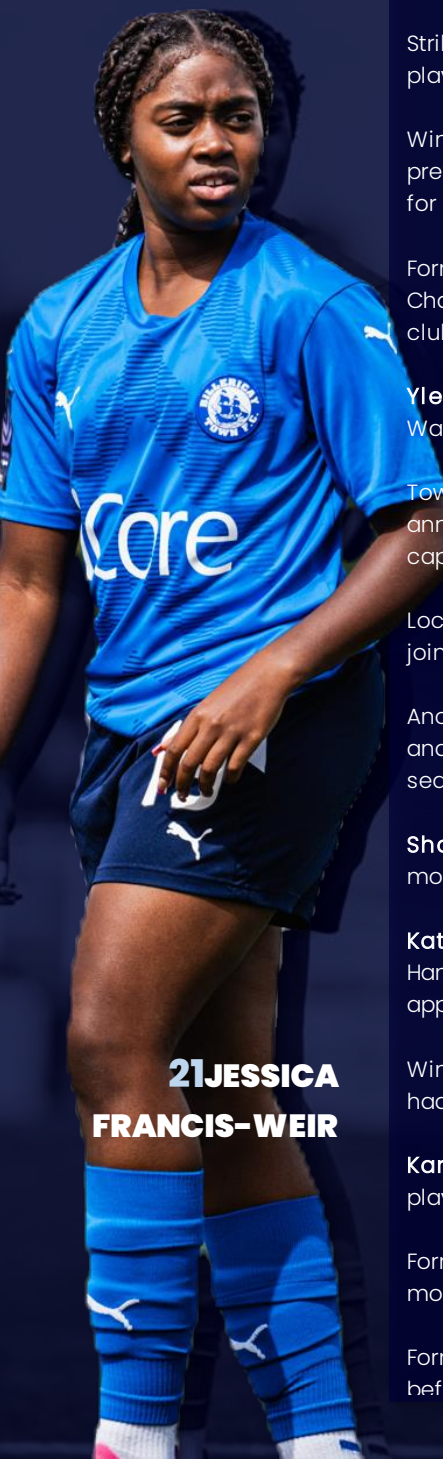
SUBS2

GOALS20

9 MADDIE BIGGS

boost
DIRECT

JOINING



**21 JESSICA
FRANCIS-WEIR**

Our first signing of the summer was midfielder **Bonnie Horwood**. Bonnie was playing with Ipswich last season and has played for Lincoln City and Millwall Lionesses.

Striker **Valentine Pursey** was with Hashtag last season but had played for Lewes and Brighton beforehand.

Winger **Breon Grant** joined from Chatham Town and had previously played for AFC Wimbledon. Bre is also eligible to play for Jamaica.

Former Crawley Wasps winger **Flo Jackson** also signed from Chatham Town and **Mel Espinosa** also came from the Kent club.

Ylenia Priest joined in the summer having played for Millwall, Watford and Chatham.

Town's positive link with Tottenham continues as they announced the signing of defender and former Under 21 captain **Gracie Hickman**.

Local midfielder **Abbi Smith** was with Ipswich Town and has joined The Blues for the season.

Another striker **Iesha Swaby**, was with Oxford United last season and midfielder Abbi Smith had joined Cambridge United last season from Ipswich Town. Both signed in July.

Shauna Munnely, a defender from London Bees, joined last month.

Katie O'Hanlon spent a short time with us on loan from West Ham last season before being recalled. Katie made two appearances for The Blues.

Winger **Jessica Francis-Weir** joined from Spurs Under 21s. Jess had previously played for QPR and Charlton.

Kara Fordjour, a forward, signed earlier this month. Kara has played for Charlton, Chatham and Hashtag.

Former Cheltenham keeper **Aimee Watson** signed earlier this month.

Former Charlton youngster **Teegan Attree** joined a few days before the start of the season

2024-25 SEASON

<u>Date</u>	<u>Against</u>	<u>Comp.</u>	<u>F-A</u>
18-Aug-24	GWALIA UNITED	League	
25-Aug-24	Watford (12:00)	League	
27-Aug-24	AFC Sudbury	League Cup Dec.	
01-Sep-24	Hashtag United	League	
08-Sep-24	CHELTENHAM TOWN	League	
15-Sep-24	MK Dons	League	
22-Sep-24	PLYMOUTH ARGYLE	League	
25-Sep-24	IPSWICH TOWN	League	
29-Sep-24	-	League Cup 1	
06-Oct-24	Exeter City	League	
13-Oct-24	LEWES	League	
27-Oct-24	Oxford United	League	
03-Nov-24	-	FA Cup 1	
10-Nov-24	AFC WIMBLEDON	League	
17-Nov-24	Gwalia United	League	
15-Dec-24	WATFORD	League	
05-Dec-24	HASHTAG UNITED	League	
12-Jan-25	Cheltenham Town	League	
02-Feb-25	EXETER CITY	League	
12-Feb-24	Ipswich Town	League	
23-Feb-24	Plymouth Argyle	League	
09-Mar-24	MK DONS	League	
23-Mar-24	Lewes	League	
13-Mar-24	OXFORD UNITED	League	
27-Mar-24	AFC Wimbledon	League	

COMING UP

Sunday 25 August 2024, 12:00
FAWNL Southern Premier Division
Watford v Billericay Town
 Wealdstone FC, Grosvenor Vale

FIXTURES

18 August 2024
 AFC Wimbledon v Lewes
 Billericay Town v Gwalia United
 Cheltenham Town v Plymouth Argyle
 Exeter City v MK Dons
 Hashtag United v Watford
 Oxford United v Ipswich Town

FOLLOW US

FOLLOW US ON WHATSAPP

Go to [UPDATES](#), [EXPLORE](#) for
 Billericay Town FC Women
[FOLLOW](#) us



Atlantic Pacific
 Global Logistics

BILLERICAY TOWN RESERVES

FA Women's National League
Reserve South East & Central Division

	<u>Teams</u>	<u>W</u>	<u>D</u>	<u>L</u>	<u>GD</u>	<u>Pts</u>
1	AFC Sudbury Res	0	0	0	0	0
2	Ashford Town Res	0	0	0	0	0
3	Billericay Town Res	0	0	0	0	0
4	Ipswich Town Dev	0	0	0	0	0
5	London Seaward Res	0	0	0	0	0
6	Maidenhead Dev	0	0	0	0	0
7	MK Dons Dev	0	0	0	0	0
8	QPR Res	0	0	0	0	0
9	Watford Dev	0	0	0	0	0

<u>Date</u>	<u>Opponents</u>	<u>Comp.</u>
01-09-24	Watford Dev	L Cup
08-09-24	QPR RES	League
15-09-24	LONDON SEAWARD RES	League
22-09-24	AFC Sudbury Res	League
29-09-24	Asford Town Res	League
06-10-24	MAIDENHEAD DEV	League
13-10-24	MK Dons Dev	League
03-11-24	WATFORD DEV	League
10-11-24	IPSWICH TOWN DEV	League
17-11-24	QPR Res	League
08-12-24	AFC SUDBURY RES	League
15-12-24	ASHFORD TOWN RES	League
05-01-25	Maidenhead Dev	League
12-01-25	MK DONS DEV	League
19-01-25	Watford Dev	League
26-01-25	London Seaward Res	League
02-02-25	Ipswich Town Dev	League

STARTS0

SUBS2

GOALS1

MAYA LANE



Ravens Bakery
Bakers & Specialist Cake Makers



play ▶

fund +

win ★



SUPPORT
BILLERICA TOWN WOMEN

STARTS27

SUBS0

GOALS2

3LIV SMITH

WIN
CASH PRIZES

playfundwin.com

2023-24 SEASON

<u>Date</u>	<u>Against</u>	<u>Comp.</u>	<u>F-A</u>
20-Aug-23	Plymouth Argyle	League	6-0
27-Aug-23	Ipswich Town	League Cup	2-4
03-Sep-23	RUGBY BOROUGH	League	2-3
06-Sep-23	Chatham Town	League	0-0
10-Sep-23	London Bees	League	6-1
17-Sep-23	CARDIFF CITY	League	3-3
24-Sep-23	MK Dons	League	1-1
01-Oct-23	Portishead Town	League Plate 1	9-0
08-Oct-23	Portsmouth	League	0-7
11-Oct-23	HASHTAG UNITED	League	1-2
22-Oct-23	CHELTENHAM TOWN	League	0-1
31-Oct-23	Haringey Borough	Isthmian QF	2-0
05-Nov-23	SOUTHAMPTON WOMEN	League Plate 2	9-0
12-Nov-23	Real Bedford	FA Cup 1	5-0
26-Nov-23	DULWICH HAMLET	FA Cup 2	2-1
03-Dec-23	IPSWICH TOWN	League	2-2
10-Dec-23	London City Lionesses	FA Cup 3	0-6
17-Dec-23	Oxford United	League	0-8
07-Jan-24	PORTSMOUTH	League	0-1
14-Jan-24	LONDON BEES	League	4-2
21-Jan-24	HASHTAG UNITED RESERVES	Essex QF	1-0
24-Jan-24	Dulwich Hamlet	Isthmian SF	3-1
28-Jan-24	EXETER CITY	League Plate QF	0-2
04-Feb-24	Cardiff City	League	1-2
11-Feb-24	MK DONS	League	1-1
18-Feb-24	BILLERICAY TOWN RESERVES	Essex SF	6-0
21-Feb-24	CHATHAM TOWN	League	5-1
10-Mar-24	Rugby Borough	League	2-4
13-Mar-24	Hashtag United	League	0-2
24-Mar-24	Cheltenham Town	League	2-4
31-Mar-24	OXFORD UNITED	League	0-2
02-Apr-24	Ashford United	Isthmian Final	5-0
11-Apr-24	HASHTAG UNITED	Essex Final	2-7
21-Apr-24	PLYMOUTH ARGYLE	League	1-1
05-May-24	Ipswich Town	League	0-1

FINAL LEAGUE TABLE

	<u>TEAMS</u>	<u>P</u>	<u>W</u>	<u>D</u>	<u>L</u>	<u>Pt</u>
1	Portsmouth	22	19	1	1	58
2	Hashtag United	22	16	1	4	49
3	Rugby Borough	22	15	0	6	45
4	Ipswich Town	22	13	2	6	41
5	Oxford United	22	13	2	6	41
6	MK Dons	22	9	5	7	32
7	Cheltenham Town	22	7	3	11	24
8	Cardiff City	22	6	4	11	22
9	Plymouth Argyle	22	6	3	12	21
10	BILLERICAY TOWN	22	4	6	11	18
11	Chatham Town	22	0	6	15	6
12	London Bees	22	0	3	18	3

TOP GOAL SCORERS

<u>Players</u>	<u>Cup</u>	<u>League</u>	<u>Total</u>
Maddie Biggs	7	13	20
Ruby Sealey	3	8	11
Amber Gaylor	6	0	6
Soraya Walsh	5	1	6
Leanne Bell	2	3	5
Ché Thomas	3	2	5
Jess King	3	1	4
Ella Houghton	2	2	4
Alex Hennessy	2	2	4
Zoe Rushen	2	1	3
Karissa Doo	2	1	3

2023-24 SEASON

The Blues played a total of 3,455 minutes of football last season, 2,254 in the league and 1,201 in cup competitions.

Leanne Bell played 3,237 minutes, 93.69% of the teams playing time playing an average of 95.21 minutes per match. Maddie Biggs played for 81.49% of the entire season (2,814 minutes) and Alex Baker completed 2,696 minutes (78%).

Maddie won the Golden Boot, scoring a total of 20 goals, 13 of those in the league. This works out at 0.63 goals per game, the highest in the team.

Ruby Sealey created 9 goals in her 32 appearances, 0.28 goals created per appearance. Ruby won the Player's Player and Supporters' Player of the Season awards. Maddie assisted with 7 goals, 0.22 per appearance.

Jánaye Beaufort was awarded the Managers' Player of the Season. Jánaye made a goal scoring debut against Haringey in the Isthmian Women's Cup in October, ending the season with 23 appearances.

Club Captain, Karissa Doo announced at Christmas that she would be retiring at the end of last season. KK lifted the Phillip Coster Memorial Award, highlighting just how important she has been in her time with the club.

Alex Baker ended the season with 27 appearances, 5 clean sheets and the Symes Trophy

The 2023-24 season saw debuts for four reserve players.

Lilly Wolstenholme made her first team debut in the 6-1 away win at London Bees, following with a second appearance in the 2-0 home defeat against Exeter City.

Bridgette Allen and Maya Lane made their debuts in the narrow home defeat against Portsmouth. Bridgette ended the season with 5 appearances. Maya made one more appearance, scoring at Cardiff as The Blues lost 2-1.

Town drew their last home match of the season, a 1-1 draw with Plymouth. Tilly Jones came off of the bench to make her First Team debut.



STARTS 31
SUBS 1
GOALS 5

LEANNE BELL

SPONSORSHIP OPPORTUNITIES

It's a new era at BTFC Women and we'd love for you to be a part of it and involved in a growing women's football club in Essex!

Our new 1st Team Manager will be joined by new coaching staff along with a squad of new and familiar faces and we're hoping a fresh start can propel us forwards. We can't wait to go again in August for our 3rd season in the third tier of women's football!

With the women's game growing at the pace, it is and competing against teams with a large financial backing we are always looking to add our band of amazing sponsors and to welcome them to the Blues family!

If you personally, your business, or a friend's business want to get involved in Women's football then now is the time. We have a range of sponsorship opportunities to suit all budgets.

As a community club, our ambition is to empower women and girls through sport and support local charities and causes. We have 20+ teams starting and 8 years old, all the way up to 80 with our women's walking football team so everyone can enjoy the beautiful game.

The popularity and visibility of women's football is increasing by the day, come and join our charge!

To find out how you can get involved please contact our chairman, Greg Lake on gl@billericaytownfc.co.uk



STARTS 36

SUBS 19

GOALS 1

16 CHARLOTTE O'SHEA

GWALIA UNITED



Gwalia United F.C.
Formed 1975

@GwaliaUnited

HOME GROUND:
Newport Stadium
Stadium Way
Newport
NP19 4PT

MANAGER:
Fern Burrage-Male

HONOURS

League

F.A. Women's National League
South

Champions 2005-06

F.A. Women's National League
Division 1 South-West

Champions 2022-23

Cup

Welsh Women's Cup

Winners 1994-95, 2003-04, 04-05,
05-06, 06-07, 07-08, 08-09, 09-10,
11-12, 12-13, 15-16

Established in 1975 as Llanedeyrn L.F.C. following a local charity match, the club underwent name changes, evolving into Cardiff L.F.C. in 1981 and affiliating with Inter Cardiff F.C. in 1993 at the Cardiff Athletic Stadium. After terminating ties with Inter Cardiff in 1997, the club became Cardiff County L.F.C., aligning with the Cardiff County Council. By 2001, the club associated with Cardiff City, the local professional men's team.

However, in the 2003 season, the club became independent again, severing ties with the men's counterpart. Despite retaining the Cardiff City name and kit colours, the crest changed, featuring the Welsh red dragon instead of the 'Bluebirds' moniker. In 2006, Cardiff City Ladies achieved success by winning the FA Women's Premier League Southern Division and earning promotion to the National Division. After a relegation in the 2007-08 season, the club secured promotion again in 2010-11.

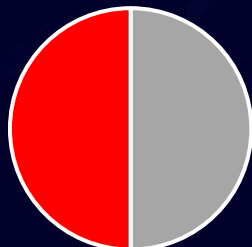
With victories in the Welsh Women's Cup, Cardiff City Ladies represented Wales in the UEFA Women's Cup.

The club announced a rebranding for the 2024-25 season as they became Gwalia United.

HEAD-TO-HEAD

This afternoon's match will only be the third meeting between the two sides. The Welsh side draw in Essex and won the match in Cardiff.

The away match was notable for 16-year-old striker Maya Lane's first goal for the club.



■ BTFC ■ Draw ■ GUFC



Stare at the dot on the players nose for 10-15 seconds and then look at a blank surface.

ON THE ROAD



STARTS4

SUBS6

GOALS0

8NIA EVANS

WATFORD (Wealdstone FC, Grosvenor Vale HA4 6JQ)

Sunday 25 August 2024, 12:00

By car the journey should take around an hour, travelling north on the M25 and leaving at junction 16 to join the M40, then A40 before joining the B467 and B466 into Ruislip.

The closes train station is Ruislip, which is a 10-minute walk from the ground. West Ruislip and Ruislip Gardens are a bit further away.

Ruislip is on the Metropolitan line, about 45 minutes from London Liverpool Street.

AFC SUDBURY (Brundon Lane CO10 7HN)

Tuesday 27 August 2024, 7:45pm

Brundon Lane (CO10 7HN) is around an hour from Travelling by car you will leave the A12 at Boreham to join the A1016 and then the A131 until you get to Braintree. You join the A120 until you rejoin the A131, which goes through Halstead until you get to Sudbury.

Sudbury station can be reached by changing at Marks Tey, which is in the Colchester/Ipswich line from Shenfield. The station is on the other side of town from the ground.

HASHTAG UNITED (Aveley FC, Parkside RM15 4PX)

Sunday 1 September 2024, 2:00pm

By car you have a few options which will take you around 30 minutes from Billericay. The obvious choice is to join the M25 from the A127, eventually leaving at junction 30 by Lakeside Shopping Centre. You then join Ship Lane, going past Grays Athletics' new home at the Thurrock Hotel, you turn on to High Street/Stifford Road and then left onto Corporal Nicky Mason Way, where you will be able to see the ground. You will need to take into account that the traffic around Lakeside can be bad. You can avoid the M25 and go through South Ockendon or Belhus Country Park.

The nearest train station to the ground is Chafford Hundred, on the other side of Lakeside. By bus you would need to get the 300 from Billericay into Basildon, then switch to the 100 to Lakeside. From there the 372 to Hornchurch stops a 15-minute walk away from the ground.

WORLD CUP QUIZ

1 - The first FIFA Women's World Cup was hosted by China in 1991. Which nation did USA beat in the final?

2 - What was the nationality of the first player to appear in the both the Women's Cricket World Cup (2009) and Women's World Cup (2011)?

3 - England first played at a World Cup Finals in 1995. Who scored the Lionesses first goal?

4 - There are six nations that have appeared in the Final of both the Men's and Women's World Cup. Who are they?

5 - Who is the all-time top scorer at the Women's World Cup Finals?

6 - The USA began the 2019 World Cup by recording the biggest victory in the Women's World Cup. What was the score and who did they beat?

7 - The first non-FIFA Women's World Cup was held in 1971 and was won by Denmark. Which nation hosted the tournament?

8 - The first FIFA-organised women's tournament was hosted by China and won by Norway. What year was the tournament played?

9 - Which player currently holds the record for scoring the most goals for England at Women's World Cup finals?

10 - Which nation will host the 2027 World Cup?

QUIZ ANSWERS

1 - Norway | 2 - Australian (Ellyse Perry) | 3 - Gillian Coultard | 4 - Germany, Sweden, Brazil, The Netherlands, Spain, England | 5 - Marta (Brazil) | 6 - 13-0 v Thailand | 7 - Italy | 8 - 1988 | 9 - Ellen White (7 goals) | 10 - Brazil



GETTING TO KNOW BREON GRANT

New signing, Breon Grant, is the first player this season to help me fill a couple of pages in the programme.

Age?

24

Where are you from?

I grew up in London but now live in Kent.

Who do you support?

Arsenal

Footballing hero?

Thierry Henry

Pre-Match Ritual?

Left sock always goes on first, and then my left boot

Best player you've played with?

Keira Flannery

Toughest player you've played against?

Sanaa Williams - I played against and with her in America. She's a very good defender

If you could have a superpower on the pitch, what would it be and why?

Invisibility- no one will know where I am, hidden full of surprises



12BREON GRANT

ON
THIS
DAY

The Blues opened the 2019-20 FA Women's National League Division 1 South-East season with a home match against Kent Football United.

The Blues win 5-2 with goals from Danica Dougal, Zoe Rushen, Lindsey Morgan and 2 from Jay Blackie.





If you were stranded on a desert island with two teammates, who would they be and why?

Rome (Romany Wellington) because she's funny and silly and Valentine because she's wise and smart.

How do you handle the pressure of important matches and what techniques do you use to stay focused?

I always remember that a mistake is just a mistake so let it go as well as letting the first few touches of the game stay out of my head. I keep talk positively to myself throughout the match.

Are there any specific football players or coaches who have influenced your playing style or approach to the game?

When I was in America it was always about hard work from the coaches so remembering hard work really does go a long way

How do you balance the demands of your football career with your personal life and what hobbies or activities do you enjoy off the field?

Time management with when I can see friends or understanding the demands of recovering my body is important. Hobbies consist of going out to eat/trying new restaurants & seeing my friends and family, trying new activities in my spare time as I enjoy a good activity

If you could talk to an animal, which one would it be and what would you ask?

I'd be a dolphin as they are my favourite animal and I'd ask how they breath under water!



BILLERICAY TOWN

- 1 Aimee WATSON (GK)
- 2 Flo JACKSON
- 3 Liv SMITH
- 4 Ylenia PRIEST
- 5 Bonnie HORWOOD
- 6 Romany WELLINGTON
- 7 Valentine PURSEY
- 8 Nia EVANS
- 9 Maddie BIGGS
- 10 Ella HOUGHTON
- 11 Breon GRANT
- 12 Beau PARKER (c)
- 14 Iesha SWABY
- 16 Charlotte O'SHEA
- 17 Mel ESPINOSA
- 20 Kara FORDJOUR
- 21 Jessica FRANCIS-WEIR
- 22 Teegan ATTREE
- 23 Abbi SMITH
- 26 Gracie HICKMAN
- 30 Katie O'HANLON (GK)

GWALIA UNITED

- 1 Laura O'SULLIVAN (GK)
- 2 Libby PIGGOTT
- 3 Tia ASKER
- 4 Emily POOLE
- 5 Ellie LAKE
- 6 Elena COLE
- 7 Ellie SARGENT
- 8 Chloe LLOYD
- 11 Jessie TAYLOR
- 12 Cori WILLIAMS (c)
- 14 Lauren DAVIES
- 15 Shurima VINE
- 17 Isobel NEWNS
- 18 Caitlin WILLIAMS
- 19 Thierry-Jo GAUVAIN
- 21 Ruby SCAHILL
- 23 Cerys JONES
- 25 Keira O'KEEFE
- 26 Maisie MILLER
- 27 Kylie NOLAN
- 28 Cati GREGSON
- 31 Yasmin DAVIES (GK)

REFEREE:

Lorraine CATCHPOLE

ASSISTANT REFEREES:

Lily PRIEST

Michael WALLACE



PANTHEON SPECIALITY